

# d.a.t.s

*Dickens Assessment & Training Services*

2020 Course Information

Queensland

## ABOUT US

Dickens Assessment and Training Services (DATS) was established by Director Malcolm Dickens. Malcolm has a wealth of experience with construction and earthmoving equipment as well as years of experience in the construction industry. With this experience and Malcolm's passion for training and assessing, he recognised that there was a need for properly skilled and trained people in the Construction, Resources, Transport and Mining Industries.

Thus, Malcolm commenced a privately owned Registered Training Organisation (RTO), Dickens Assessment and Training Services in 2007 and has consistently been providing quality training and assessments for individual students, industry and the vocational education and training (VET) sector.

### Professional Staff

DATS is owned and operated by a team with extensive industry experience. Senior management and training personnel at DATS have all progressed from being industry employees to highly regarded trainers and assessors in their own areas of expertise.

### About Our Trainers

Our trainers and assessors have over 20 years experience and all courses are delivered to the highest standard to meet strict government regulations and workplace health and safety standards and site-specific requirements, meaning we have the right skills for your next training course. Our trainers and assessors are experienced hands on people with a proven track record in working with operators of all nationalities in the construction industry. They hold the current version of Certificate IV in Training and Assessment and have relevant and current Vocational Qualifications and licences with relevant and current industry experience in the areas they train and assess in.

Our trainers and assessors continue to develop their Vocational Education and Training (VET) knowledge and skills as well as their industry currency.

### Service Area

Our services cover all areas of New South Wales and Queensland. DATS offers courses at your workplace, our training rooms in Coffs Harbour, or a suitably established training venue. We specialise in onsite and site-specific training and cover Verification of Competency in all courses offered.

## WHY CHOOSE US

At DATS we believe that adequate training by qualified and experienced trainers is paramount to a safe workplace, and by enrolling in one of our courses you can achieve your goal.

Don't leave yourself open to hazards in the workplace and potential accidents. Cover all bases and ensure both you and your employees are fully trained and qualified to carry out the work that will be undertaken.

At DATS we will provide you with:

- Professional and friendly office staff who will look after everything from your initial enquiry to your course completion and issue of your certificate.
- Easy online enrolment process.
- Fully qualified and professional trainers with many years experience in their fields of expertise.
- Interesting and fun courses with a mixture of theory and practical sessions (where applicable)
- Quality Training Resources
- If you are a Job Service Provider, we will keep in contact with your jobseeker and provide them with course confirmation letters and follow up with reminder calls before their course.
- On-site training at your own venue for groups if required (subject to approval)

## CONTACT US

If you need any more information about our services, please feel free to contact us:

**[www.datservices.com.au](http://www.datservices.com.au)**

### Eagle Farm Office

1/56 Eagleview Place, Eagle Farm QLD 4009

PO Box 235, Hamilton Central QLD 4007

P: 07 3868 3486

E: [admin@datservices.com.au](mailto:admin@datservices.com.au)

W: [www.datservices.com.au](http://www.datservices.com.au)

## Regularly Scheduled Courses

### HIGH RISK LICENCES

<b>FORKLIFT</b> TLILIC0003 Licence to operate a forklift truck	3 days	<b>\$550</b>
<b>EWP</b> TLILIC0005 Licence to operate a boom-type elevating work platform (boom length 11 metres or more)	3 days	<b>\$775</b>
<b>DOGGING</b> CPCCLDG3001A Licence to perform dogging	5 days	<b>\$1500</b>

### SHORT COURSES

<b>CONFINED SPACES</b> RIIWHS202D Enter and work in confined spaces	1 day	<b>\$350</b>
<b>WORK SAFELY AT HEIGHTS</b> RIIWHS204D Work safely at heights	1 day	<b>\$325</b>

### LOADSHIFTING

<b>EXCAVATOR</b> RIIMPO320F Conduct civil construction excavator operations	<b>\$POA</b>
<b>SKID STEER</b> RIIMPO318F Conduct civil construction skid steer loader operations	
<b>ROLLER</b> RIIMPO317F Conduct roller operations	
<b>ARTICULATED HAUL TRUCK</b> RIIMPO337E Conduct articulated haul truck operations	
<b>FRONT-END LOADER</b> RIIMPO321F Conduct civil construction wheeled front-end loader operations	
<b>TRACTOR</b> RIIMPO315E Conduct tractor operations	

· Training & Assessment (with Logbook) · Assessment Only · VOC\*

\* Includes GST

## Other courses available on request

CIVIL CONSTRUCTION	
RII30915	Certificate III in Civil Construction (General)
RII30815	Certificate III in Civil Construction Plant Operations
RII40715	Certificate IV in Civil Construction Supervision
CRANES / LIFTING	
TLILIC0010	Licence to operate a slewing mobile crane (up to 20 tonnes) - C2
TLILIC0013	Licence to operate a slewing mobile crane (up to 60 tonnes) - C6
TLILIC0014	Licence to operate a slewing mobile crane (up to 100 tonnes) - C1
TLILIC0015	Licence to operate a slewing mobile crane (over 100 tonnes) - C0
TLILIC0008	Licence to operate a non-slewing mobile crane (greater than 3 tonnes capacity) - CN
TLILIC0002	Licence to operate a vehicle loading crane (capacity 10 metre tonnes and above) - CV
TLILIC0004	Licence to operate an order picking forklift truck - LO
RIIHAN301E	Operate elevating work platform (Yellow Card)
RIIHAN309F	Conduct telescopic materials handler operations (Gold Card)
RIIHAN203D	Conduct lifting operations
RIIHAN305D	Operate a gantry or overhead crane
RIIHAN307E	Operate a vehicle loading crane
OTHER	
AHPCPM203	Fell small trees
AHCMOM213	Operate and maintain chainsaws
RIIHAN308F	Load and unload plant
RIISAM203D	Use hand and power tools
RIISAM204D	Operate small plant and equipment
TLIA1001	Secure cargo
TLID1001	Shift materials safely using manual handling methods
LOADSHIFTING	
RIIMPO319E	Conduct backhoe/loader operations
RIIMPO322E	Conduct civil construction tracked front end loader operations
RIIMPO323E	Conduct civil construction dozer operations
RIIMPO324F	Conduct civil construction grader operations
RIIMPO325E	Conduct civil construction scraper operations
RIIMPO326E	Conduct water vehicle operations
RIIMPO338E	Conduct rigid haul truck operations

***For further information on these courses please contact our office***

# Evidence of Identity Requirements for Workplace Health & Safety Queensland High Risk Work Licences courses

To apply for a licence you may be required to provide evidence of identity to Workplace Health and Safety Queensland. Combined, these documents should show evidence of:

- your full name
- your signature
- date of birth
- a photo of yourself.

All documents must be original as supplied and issued by an Australian authority unless otherwise indicated. If you are unable to provide the required documentation contact us on 1300 362 128 for more information.

**If you are unable to provide the required documents, you will not be eligible to sit the course.**

## Evidence of identity documents

Three evidence of identity documents can be made up of either:

- one category A and two category B
- two category A and one category B

Documents	Status
<b>Category A</b>	
Full birth certificate issued by the Registrar of Births, Deaths and Marriages	Current
Bicentennial birth certificate (born in 1988)	Current
Australian citizenship certificate	Current
Australian passport (including Australian Document of Identity)	Current or expired less than two years
Foreign passport	Current or expired less than two years
Australian photo driver licence	Current or expired less than two years
Adult proof of age card (18+ Card)	Issued after 01/01/1992
<b>Category B</b>	
Australian firearm licence (with photo)	Current
Education institution student identity document (must include photo and/or signature)	Current
Department of Veterans Affairs/Centrelink Pensioner Concession card (including Healthcare card)	Current
Interstate government-issued or government-approved proof of age card	Current
Medicare card	Current
Australian security guard/crowd controller licence (with photo)	Current
Australian Defence Force photo identity card	Current
Financial institution debit/credit card (must include signature and embossed/printed name). <b>Please note:</b> Card number and expiry date must be hidden. Any documents showing sensitive bank details will be rejected.	Current



# Forklift

QUEENSLAND

<b>Unit:</b>	TLILIC0003 Licence to operate a forklift truck
<b>Price:</b>	\$550 per person
<b>Duration:</b>	3 days
<b>Location:</b>	Our venue, or your worksite for groups (please ask us for a quote)
<b>Pre-requisites:</b>	Minimum age 18, 100 points of Identification (as per Workplace, Health & Safety QLD), adequate literacy & numeracy and USI.

This unit is based on the National Standard for Licensing Persons Performing High Risk Work & involves the skills and knowledge required to operate a forklift, including checking forklift condition, driving the forklift to fulfill operational requirements, monitoring site conditions and monitoring and maintaining forklift performance.

## Course Delivery

A learner guide and review questions will be provided to the student prior to course commencement. To fulfil the training requirements for this course, the student must read through this, complete the review questions and bring both with them on the day.

The course consists of face-to-face theory, mathematical and practical training. Assessment is conducted through a combination of practical demonstration and verbal or written questioning.

## Course Content

- Compliance with WHS licensing legislation.
- Communicate and work safely with others in the work area.
- Hazard identification and control.
- Conduct pre-start-up, operational, shut down and secure checks according to procedures.
- Operate the forklift truck and move loads safely, including driving and maneuvering, picking up and placing of loads at various stack heights.
- Calculations.

## Course Requirements

Students will need to wear appropriate clothing including a hi-visibility shirt/vest and enclosed shoes or boots, as well as meet all pre-requisites listed.

## Course Fees

All enrolments are considered tentative until payment has been received.

## Course Outcome

Upon successful completion participants will receive a Nationally Recognised Statement of Attainment in *TLILIC0003 - Licence to operate a forklift truck* and an Assessment Summary (AS1) from the accredited assessor to lodge your HRW Licence application.

## Important

Upon successful completion of this course, participants have 60 days to submit their application for their HRW Licence online via their QGov account. Licensing fees apply. Anyone assessed as 'not competent' can be reassessed on the relevant section **within 2 calendar months of initial assessment** (after 2 months a full reassessment will be required). All reassessments must be undertaken within 12 months. Workplace, Health & Safety QLD HRW Licences are valid for 5 years.





<b>Unit:</b>	TLILIC0005 Licence to operate a boom-type elevating work platform (boom length 11 metres or more)
<b>Price:</b>	\$775 per person
<b>Duration:</b>	3 days
<b>Location:</b>	Our venue, or your worksite for groups (please ask us for a quote)
<b>Pre-requisites:</b>	Minimum age 18, 100 points of Identification (as per Workplace, Health & Safety QLD), adequate literacy & numeracy and USI.

This unit is based on the National Standard for Licensing Persons Performing High Risk Work. It is the responsibility of an employer to ensure that all persons operating an elevating work platform are competent to do so, and that safe systems of work are provided at all times in their use. This training outlines the competency required to safely and effectively operate an EWP.

### Course Delivery

A learner guide and review questions will be posted or emailed to you prior to course commencement. To fulfil the training requirements for this course, the student must read through this, complete the review questions and bring both with them on the day. This course is conducted face-to-face with the assessment based on competency i.e. ability to perform tasks to a required standard.

Assessment is conducted through a combination of practical demonstration and verbal or written questioning, including mathematics.

# Elevating Work Platform (over 11m)

QUEENSLAND

Students may choose to undertake workplace training - After 1 day of formal training, students are issued with a logbook to record their practical workplace training (30 hours) under the supervision of a licensed operator. When the student is ready, a final assessment will be undertaken. Final assessment must be completed within 12 months.

### Course Content

- Compliance with site safety plan and WHS legislation / regulations / codes of practice applicable to workplace operations
- Safe and effective operational use of tools, harnesses, plant and equipment
- Set up, operation and shut down of an EWP including emergency safety devices, e.g. electronic override, ground controls and emergency descent devices
- Job planning and preparation, worksite inspection, equipment defect identification, hazard identification, determination of work requirements

### Course Requirements

Students will need to wear appropriate clothing including a hi-visibility shirt/vest and enclosed shoes or boots, as well as meeting all pre-requisites.

### Course Fees

All enrolments are considered tentative until payment has been received.

### Course Outcome

Upon successful completion participants will receive a Nationally Recognised Statement of Attainment in *Licence to operate a boom-type elevating work platform (boom length 11 metres or more) (TLILIC0005)* and an Assessment Summary (AS1) from the accredited assessor to lodge your HRW Licence application.



<b>Unit:</b>	CPCCLDG3001A Licence to perform dogging
<b>Price:</b>	\$1500 per person
<b>Duration:</b>	5 days
<b>Location:</b>	Our venue, or your worksite for groups (please ask us for a quote)
<b>Pre-requisites:</b>	Minimum age 18, 100 points of Identification (as per Workplace Health Safety QLD), adequate literacy & numeracy and USI.

This unit is based on the National Standard for Licensing Persons Performing High Risk Work (HRW) and is a legal requirement for any person who directs the operators of mobile and tower cranes. It will provide the skills and knowledge required to direct the crane operator to safely sling and direct loads, and to maintain and care for dogging equipment.

### Course Delivery

A learner guide and review questions will be provided to the student prior to course commencement. To fulfil the training requirements for this course, the student must read through this, complete the review questions and bring both with them on the day. The course consists of face-to-face theory, mathematical and practical training. Students may require additional mathematical study time during the training to ensure the best possible chance of a successful outcome.

Assessment is conducted through a combination of practical demonstration and verbal or written questioning, including mathematics.

# Dogging

QUEENSLAND

### Course Content

- Use the various types of ropes, slings, chains and accessories.
- Calculate the safe working load (SWL) of any rope, slings, or chain to be used for lifting.
- Assess the weight of loads to be lifted.
- Safely sling loads of different weights and sizes.
- Direct a crane or hoist operator in the movement of a load when the load is out of the operator's view.
- Hand and whistle signals used for directing loads and knot tying.

### Course Requirements

Students will need to wear appropriate clothing including a hi-visibility shirt/vest and enclosed shoes or boots, as well as meet all pre-requisites listed.

### Course Fees

All enrolments are considered tentative until payment has been received.

### Course Outcome

Upon successful completion participants will receive a Nationally Recognised Statement of Attainment in *Licence to perform dogging – CPCCLDG3001A* and an Assessment Summary (AS1) from the accredited assessor to lodge your HRW Licence application.

### Important

Upon successful completion of this course, participants have 60 days to submit their application for their HRW Licence online via their QGov account. Licensing fees apply.

Anyone assessed as 'not competent' can be reassessed on the relevant section **within 2 calendar months of initial assessment** (after 2 months a full reassessment will be required). All reassessments must be undertaken within 12 months.

Workplace, Health & Safety QLD HRW Licences are valid for 5 years.





<b>Unit:</b>	CPCCLSF2001A Licence to erect, alter and dismantle scaffolding basic level
<b>Price:</b>	Price on application
<b>Duration:</b>	5 days
<b>Location:</b>	At your worksite
<b>Pre-requisites:</b>	Minimum age 18, 100 points of Identification (as per Workplace, Health & Safety QLD), adequate

This unit is based on the National Standard for Licensing Persons Performing High Risk Work and allows the certified scaffolder to build modular scaffold to 45 metres in height.

### Course Delivery

A learner guide and review questions will be provided to the student prior to course commencement. To fulfil the training requirements for this course, the student must read through this, complete the review questions and bring both with them on the day. The course consists of face-to-face theory, mathematical and practical training.

Assessment is conducted through a combination of practical demonstration and verbal or written questioning, including mathematics.

Students may choose to undertake workplace training - After 1 day of formal training, students are issued with a logbook to record their practical workplace training (40 hours) under the supervision of a licensed operator. When the student is ready, a final assessment will be undertaken. Final assessment must be completed within 12 months.

### Course Content

- How to erect, alter and dismantle scaffold correctly, safely and efficiently, in the correct sequence.

# Basic Scaffolding

QUEENSLAND

- How to read and understand suppliers' information, general site plans and design drawings, including simple
- calculations of dead loads and live loads permissible on different ratings of scaffolding.
- A thorough knowledge of scaffolding equipment being used and construction methods.
- Inspecting scaffolding equipment for faults.

### Course Requirements

Students will need to wear appropriate clothing including a hi-visibility shirt/vest and enclosed shoes or boots, as well as meet all pre-requisites listed.

### Course Fees

A deposit of \$1,000 is required within 7 days of enrolment, with the balance to be paid on the second day of classroom attendance. All enrolments are considered tentative until payment of the deposit is received.

### Course Outcome

Upon successful completion participants will receive a Nationally Recognised Statement of Attainment in *Licence to erect, alter and dismantle scaffolding basic level – CPCCLSF2001A* and an Assessment Summary (AS1) from the accredited assessor to lodge your HRW Licence application.

### Important

Upon successful completion of this course, participants have 60 days to submit their application for their HRW Licence online via their QGov account. Licensing fees apply.

Anyone assessed as 'not competent' can be reassessed on the relevant section **within 2 calendar months of initial assessment** (after 2 months a full reassessment will be required). All reassessments must be undertaken within 12 months.

Workplace, Health & Safety QLD HRW Licences are valid for 5 years.



<b>Unit:</b>	TLILIC0015 - Licence to operate a slewing mobile crane (over 100 tonnes)
<b>Price:</b>	Price on application
<b>Duration:</b>	5 days
<b>Location:</b>	At your worksite
<b>Pre-requisites:</b>	Hold a current National HRWL to perform dogging. Hold a current National HRWL to operate a Slewing Mobile crane (up to 60 Tonnes), and current industry experience operating a slewing mobile crane of between 20t and up to 60t competently for at least 2 years. Minimum age 18, 100 points of Identification (as per Workplace, Health & Safety QLD), adequate literacy & numeracy and USI.

This unit is based on the National Standard for Licensing Persons Performing High Risk Work and is a legal requirement for any person who operates a slewing mobile crane (over 100 tonnes).

This licence entitles the holder to also operate non-slewing and vehicle loading cranes.

### Course Delivery

A learner guide and review questions will be provided to the student prior to course commencement. To fulfil the training requirements for this course, the student must read through this, complete the review questions and bring both with them on the day. The course consists of face-to-face theory, mathematical and practical training. Students may require additional mathematical study time during the training to ensure the best possible chance of a successful outcome.

Assessment is conducted through a combination of practical demonstration and verbal or written questioning, including mathematics. Students may choose to undertake workplace training - After 1 day of formal training, students are issued with a logbook to record their practical workplace training (70 hours) under the supervision of a licensed operator. When the student is ready, a final assessment will be undertaken. Final assessment must be completed within 12 months.

# CO Crane

## QUEENSLAND

- Work planning & conducting routine checks
- Setting up the crane
- Transferring/moving loads
- Load calculation
- Shut down and securing the crane

### Course Requirements

Students will need to wear appropriate clothing including a hi-visibility shirt/vest and enclosed shoes or boots, as well as meet all pre-requisites listed.

### Course Fees

A deposit of \$1,000 is required within 7 days of enrolment, with the balance to be paid on the second day of classroom attendance. All enrolments are considered tentative until payment of the deposit is received.

### Course Outcome

Upon successful completion participants will receive a Nationally Recognised Statement of Attainment in *TLILIC0015 - Licence to operate a slewing mobile crane (over 100 tonnes)* and an Assessment Summary (AS1) from the accredited assessor to lodge your HRW Licence application.

### Important

Upon successful completion of this course, participants have 60 days to submit their application for their HRW Licence online via their QGov account. Licensing fees apply.

Anyone assessed as 'not competent' can be reassessed on the relevant section **within 2 calendar months of initial assessment** (after 2 months a full reassessment will be required). All reassessments must be undertaken within 12 months.

Workplace, Health & Safety QLD HRW Licences are valid for 5 years.



# C1 Crane

QUEENSLAND

<b>Unit:</b>	TLILIC0014 - Licence to operate a slewing mobile crane (up to 100 tonnes)
<b>Price:</b>	Price on application
<b>Duration:</b>	5 days
<b>Location:</b>	At your worksite
<b>Pre-requisites:</b>	Hold a current National HRWL to perform dogging. Hold a current National HRWL to operate a Slewing Mobile crane (up to 60 Tonnes), and current industry experience operating a slewing mobile crane of between 20t and up to 60t competently for at least 2 years. Minimum age 18, 100 points of Identification (as per Workplace, Health & Safety QLD), adequate literacy & numeracy and USI.

This unit is based on the National Standard for Licensing Persons Performing High Risk Work and is a legal requirement for any person who operates a slewing mobile crane (up to 100 tonnes).

This licence entitles the holder to also operate non-slewing and vehicle loading cranes.

## Course Delivery

A learner guide and review questions will be provided to the student prior to course commencement. To fulfil the training requirements for this course, the student must read through this, complete the review questions and bring both with them on the day. The course consists of face-to-face theory, mathematical and practical training. Students may require additional mathematical study time during the training to ensure the best possible chance of a successful outcome.

Assessment is conducted through a combination of practical demonstration and verbal or written questioning, including mathematics. Students may choose to undertake workplace training - After 1 day of formal training, students are issued with a logbook to record their practical workplace training (70 hours) under the supervision of a licensed operator. When the student is ready, a final assessment will be undertaken. Final assessment must be completed within 12 months.

## Course Content

- Work planning & conducting routine checks
- Setting up the crane
- Transferring/moving loads
- Load calculation
- Shut down and securing the crane

## Course Requirements

Students will need to wear appropriate clothing including a hi-visibility shirt/vest and enclosed shoes or boots, as well as meet all pre-requisites listed.

## Course Fees

A deposit of \$1,000 is required within 7 days of enrolment, with the balance to be paid on the second day of classroom attendance. All enrolments are considered tentative until payment of the deposit is received.

## Course Outcome

Upon successful completion participants will receive a Nationally Recognised Statement of Attainment in *TLILIC0014 - Licence to operate a slewing mobile crane (up to 100 tonnes)* and an Assessment Summary (AS1) from the accredited assessor to lodge your HRW Licence application.

## Important

Upon successful completion of this course, participants have 60 days to submit their application for their HRW Licence online via their QGov account. Licensing fees apply.

Anyone assessed as 'not competent' can be reassessed on the relevant section **within 2 calendar months of initial assessment** (after 2 months a full reassessment will be required). All reassessments must be undertaken within 12 months.

Workplace, Health & Safety QLD HRW Licences are valid for 5 years.



# C2 Crane

QUEENSLAND

<b>Unit:</b>	TLILIC0010 - Licence to operate a slewing mobile crane (up to 20 tonnes)
<b>Price:</b>	Price on application
<b>Duration:</b>	5 days
<b>Location:</b>	Our venue or at your worksite
<b>Pre-requisites:</b>	Hold a current National HRWL to perform dogging. Minimum age 18, 100 points of Identification (as per Workplace, Health & Safety QLD), adequate literacy & numeracy and USI.

This unit is based on the National Standard for Licensing Persons Performing High Risk Work and is a legal requirement for any person who operates a slewing mobile crane (up to 20 tonnes). This licence entitles the holder to also operate non-slewing and vehicle loading cranes.

## Course Delivery

A learner guide and review questions will be provided to the student prior to course commencement. To fulfil the training requirements for this course, the student must read through this, complete the review questions and bring both with them on the day. The course consists of face-to-face theory, mathematical and practical training. Students may require additional mathematical study time during the training to ensure the best possible chance of a successful outcome. Assessment is conducted through a combination of practical demonstration and verbal or written questioning, including mathematics.

Students may choose to undertake workplace training - After 1 day of formal training, students are issued with a logbook to record their practical workplace training (70 hours) under the supervision of a licensed operator. When the student is ready, a final assessment will be undertaken. Final assessment must be completed within 12 months.

## Course Content

- Work planning & conducting routine checks
- Setting up the crane
- Transferring/moving loads
- Load calculation
- Shut down and securing the crane

## Course Requirements

Students will need to wear appropriate clothing including a hi-visibility shirt/vest and enclosed shoes or boots, as well as meet all pre-requisites listed.

## Course Fees

A deposit of \$1,000 is required within 7 days of enrolment, with the balance to be paid on the second day of classroom attendance. All enrolments are considered tentative until payment of the deposit is received.

## Course Outcome

Upon successful completion participants will receive a Nationally Recognised Statement of Attainment in *TLILIC0010 - Licence to operate a slewing mobile crane (up to 20 tonnes)* and an Assessment Summary (AS1) from the accredited assessor to lodge your HRW Licence application.

## Important

Upon successful completion of this course, participants have 60 days to submit their application for their HRW Licence online via their QGov account. Licensing fees apply.

Anyone assessed as 'not competent' can be reassessed on the relevant section **within 2 calendar months of initial assessment** (after 2 months a full reassessment will be required). All reassessments must be undertaken within 12 months.

Workplace, Health & Safety QLD HRW Licences are valid for 5 years.





# C6 Crane

QUEENSLAND

<b>Unit:</b>	TLILIC0013 Licence to operate a slewing mobile crane (up to 60 tonnes)
<b>Price:</b>	Price on application
<b>Duration:</b>	5 days
<b>Location:</b>	At your worksite
<b>Pre-requisites:</b>	Hold a current National HRWL to perform dogging. Minimum age 18, 100 points of Identification (as per Workplace, Health & Safety QLD), adequate literacy & numeracy and USI.

This unit is based on the National Standard for Licensing Persons Performing High Risk Work and is a legal requirement for any person who operates a slewing mobile crane (up to 60 tonnes). This licence entitles the holder to also operate non-slewing and vehicle loading cranes.

## Course Delivery

A learner guide and review questions will be provided to the student prior to course commencement. To fulfil the training requirements for this course, the student must read through this, complete the review questions and bring both with them on the day. The course consists of face-to-face theory, mathematical and practical training. Students may require additional mathematical study time during the training to ensure the best possible chance of a successful outcome.

Assessment is conducted through a combination of practical demonstration and verbal or written questioning, including mathematics.

Students may choose to undertake workplace training - After 1 day of formal training, students are issued with a logbook to record their practical workplace training (70 hours) under the supervision of a licensed operator. When the student is ready, a final assessment will be undertaken. Final assessment must be completed within 12 months.

## Course Content

- Work planning & conducting routine checks
- Setting up the crane
- Transferring/moving loads
- Load calculation
- Shut down and securing the crane

## Course Requirements

Students will need to wear appropriate clothing including a hi-visibility shirt/vest and enclosed shoes or boots, as well as meet all pre-requisites listed.

## Course Fees

A deposit of \$1,000 is required within 7 days of enrolment, with the balance to be paid on the second day of classroom attendance. All enrolments are considered tentative until payment of the deposit is received.

## Course Outcome

Upon successful completion participants will receive a Nationally Recognised Statement of Attainment in *Licence to operate a slewing mobile crane (up to 60 tonnes) TLILIC0013* and an Assessment Summary (AS1) from the accredited assessor to lodge your HRW Licence application.

## Important

Upon successful completion of this course, participants have 60 days to submit their application for their HRW Licence online via their QGov account. Licensing fees apply.

Anyone assessed as 'not competent' can be reassessed on the relevant section **within 2 calendar months of initial assessment** (after 2 months a full reassessment will be required). All reassessments must be undertaken within 12 months.

Workplace, Health & Safety QLD HRW Licences are valid for 5 years.



<b>Unit:</b>	TLILIC0008 - Licence to operate a non-slewing mobile crane (greater than 3 tonnes capacity)
<b>Price:</b>	Price on application
<b>Duration:</b>	5 days
<b>Location:</b>	At your worksite
<b>Pre-requisites:</b>	Hold a current National HRWL to perform dogging. Minimum age 18, 100 points of Identification (as per Workplace, Health & Safety QLD), adequate literacy & numeracy and USI.

This unit is based on the National Standard for Licensing Persons Performing High Risk Work and is a legal requirement for any person who operates a non-slewing mobile crane (greater than 10 tonnes capacity).

### Course Delivery

A learner guide and review questions will be provided to the student prior to course commencement. To fulfil the training requirements for this course, the student must read through this, complete the review questions and bring both with them on the day. The course consists of face-to-face theory, mathematical and practical training. Students may require additional mathematical study time during the training to ensure the best possible chance of a successful outcome.

Assessment is conducted through a combination of practical demonstration and verbal or written questioning, including mathematics.

Students may choose to undertake workplace training - After 1 day of formal training, students are issued with a logbook to record their practical workplace training (60 hours) under the supervision of a licensed operator. When the student is ready, a final assessment will be undertaken. Final assessment must be completed within 12 months.

# CN Crane

QUEENSLAND

### Course Content

- Work planning & conducting routine checks
- Setting up the crane
- Transferring/moving loads
- Load calculation
- Shut down and securing the crane

### Course Requirements

Students will need to wear appropriate clothing including a hi-visibility shirt/vest and enclosed shoes or boots, as well as meet all pre-requisites listed.

### Course Fees

A deposit of \$1,000 is required within 7 days of enrolment, with the balance to be paid on the second day of classroom attendance. All enrolments are considered tentative until payment of the deposit is received.

### Course Outcome

Upon successful completion participants will receive a Nationally Recognised Statement of Attainment in *TLILIC0008 - Licence to operate a non-slewing mobile crane (greater than 3 tonnes capacity)* and an Assessment Summary (AS1) from the accredited assessor to lodge your HRW Licence application.

### Important

Upon successful completion of this course, participants have 60 days to submit their application for their HRW Licence online via their QGov account. Licensing fees apply.

Anyone assessed as 'not competent' can be reassessed on the relevant section **within 2 calendar months of initial assessment** (after 2 months a full reassessment will be required). All reassessments must be undertaken within 12 months.

Workplace, Health & Safety QLD HRW Licences are valid for 5 years.





<b>Unit:</b>	TLILIC0002 - Licence to operate a vehicle loading crane (capacity 10 metre tonnes and above)
<b>Price:</b>	Price on application
<b>Duration:</b>	5 days
<b>Location:</b>	At your worksite
<b>Pre-requisites:</b>	Hold a current National HRWL to perform dogging. Minimum age 18, 100 points of Identification (as per Workplace, Health & Safety QLD), adequate literacy & numeracy and USI.

This unit is based on the National Standard for Licensing Persons Performing High Risk Work and is a legal requirement for any person who operates a vehicle loading crane (capacity 10 metre tonnes and above).

### Course Delivery

A learner guide and review questions will be provided to the student prior to course commencement. To fulfil the training requirements for this course, the student must read through this, complete the review questions and bring both with them on the day. The course consists of face-to-face theory, mathematical and practical training. Students may require additional mathematical study time during the training to ensure the best possible chance of a successful outcome.

Assessment is conducted through a combination of practical demonstration and verbal or written questioning, including mathematics.

Students may choose to undertake workplace training - After 1 day of formal training, students are issued with a logbook to record their practical workplace training (40 hours) under the supervision of a licensed operator. When the student is ready, a final assessment will be undertaken. Final assessment must be completed within 12 months.

# CV Crane

QUEENSLAND

### Course Content

- Work planning & conducting routine checks
- Setting up the crane
- Transferring/moving loads
- Load calculation
- Shut down and securing the crane

### Course Requirements

Students will need to wear appropriate clothing including a hi-visibility shirt/vest and enclosed shoes or boots, as well as meet all pre-requisites listed.

### Course Fees

A deposit of \$1,000 is required within 7 days of enrolment, with the balance to be paid on the second day of classroom attendance. All enrolments are considered tentative until payment of the deposit is received.

### Course Outcome

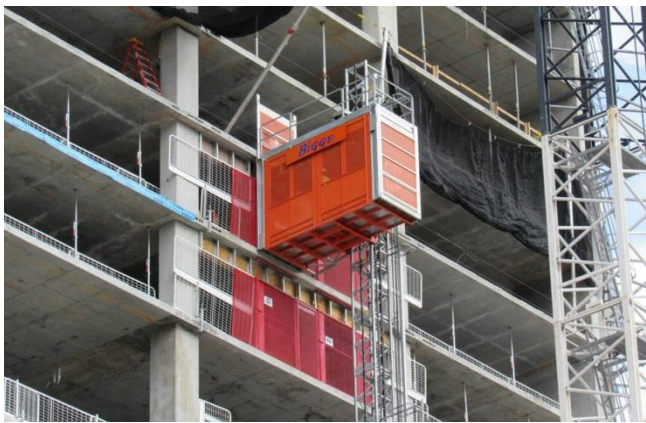
Upon successful completion participants will receive a Nationally Recognised Statement of Attainment in *TLILIC0002 - Licence to operate a vehicle loading crane (capacity 10 metre tonnes and above)* and an Assessment Summary (AS1) from the accredited assessor to lodge your HRW Licence application.

### Important

Upon successful completion of this course, participants have 60 days to submit their application for their HRW Licence online via their QGov account. Licensing fees apply.

Anyone assessed as 'not competent' can be reassessed on the relevant section **within 2 calendar months of initial assessment** (after 2 months a full reassessment will be required). All reassessments must be undertaken within 12 months.

Workplace, Health & Safety QLD HRW Licences are valid for 5 years.



<b>Unit:</b>	CPCCLHS3001A - Licence to operate a personnel and materials hoist
<b>Price:</b>	Price on application
<b>Duration:</b>	See below
<b>Location:</b>	At your worksite
<b>Pre-requisites:</b>	Minimum age 18, 100 points of Identification (as per Workplace, Health & Safety QLD), adequate literacy & numeracy and USI.

This unit specifies the outcomes required to operate a builder's hoist in which personnel, goods and/or materials may be hoisted, and which comprises a car, structure, machinery or other equipment associated with the hoist, and which may be a cantilever hoist, a tower hoist or a multiple winch operation. Included in this definition are situations where winches may be configured to operate as hoists for the transportation of personnel for licensing purposes.

#### Course Delivery

A learner guide and review questions will be provided to the student prior to course commencement. To fulfil the training requirements for this course, the student must read through this, complete the review questions and bring both with them on the day.

The course consists of face-to-face theory, mathematical and practical training.

Assessment is conducted through a combination of practical demonstration and verbal or written questioning, including mathematics.

Students may choose to undertake workplace training - After 1 day of formal training, students are issued with a logbook to record their practical workplace training (80 hours) under the supervision of a licensed operator. When the student is ready, a final assessment will be undertaken. Final assessment must be completed within 12 months.

# Personnel & Materials Hoist

QUEENSLAND

#### Course Content

- Relevant Australian Standards, Legislation, Regulations and WH&S policy
- Hazard Identification and hazard prevention
- plan work
- conduct routine checks
- conduct hoist operations and
- shut down and secure a hoist

#### Course Requirements

Students will need to wear appropriate clothing including a hi-visibility shirt/vest and enclosed shoes or boots, as well as meet all pre-requisites listed.

#### Course Fees

A deposit of \$1,000 is required within 7 days of enrolment, with the balance to be paid on the second day of classroom attendance. All enrolments are considered tentative until payment of the deposit is received.

#### Course Outcome

Upon successful completion participants will receive a Nationally Recognised Statement of Attainment in *CPCCLHS3001A - Licence to operate a personnel and materials hoist* and an Assessment Summary (AS1) from the accredited assessor to lodge your HRW Licence application.

#### Important

Upon successful completion of this course, participants have 60 days to submit their application for their HRW Licence online via their QGov account. Licensing fees apply.

Anyone assessed as 'not competent' can be reassessed on the relevant section **within 2 calendar months of initial assessment** (after 2 months a full reassessment will be required). All reassessments must be undertaken within 12 months.

Workplace, Health & Safety QLD HRW Licences are valid for 5 years.



<b>Unit:</b>	CPCCLBM3001 - Licence to operate a concrete placing boom
<b>Price:</b>	Price on application
<b>Duration:</b>	See below
<b>Location:</b>	At your worksite
<b>Pre-requisites:</b>	Minimum age 18, 100 points of Identification (as per Workplace, Health & Safety QLD), adequate literacy & numeracy and USI.

This unit of competency specifies the outcomes required to operate concrete placing booms safely. It supports the work of concrete placement workers who are responsible for locating concrete placing booms at the workplace and for setting up and operating the boom to deliver concrete safely and accurately as required. The concrete placing boom includes a knuckle boom capable of power-operated slewing and luffing to place concrete by way of pumping through a pipeline attached to, or forming part of, the boom of the plant.

#### Course Delivery

A learner guide and review questions will be provided to the student prior to course commencement. To fulfil the training requirements for this course, the student must read through this, complete the review questions and bring both with them on the day. The course consists of face-to-face theory, mathematical and practical training.

Assessment is conducted through a combination of practical demonstration and verbal or written questioning, including mathematics.

Students may choose to undertake workplace training - After 1 day of formal training, students are issued with a logbook to record their practical workplace training (170 hours) under the supervision of a licensed operator. When the student is ready, a final assessment will be undertaken. Final assessment must be completed within 12 months.

# Concrete Placing Boom

QUEENSLAND

#### Course Content

- Relevant Australian Standards, Legislation, Regulations and WH&S policy
- Hazard Identification and hazard prevention
- Planning the work
- Conducting routine plant and equipment checks
- Set up and prepare for operation
- Receiving concrete, Placing concrete
- Shut down and secure boom

#### Course Requirements

Students will need to wear appropriate clothing including a hi-visibility shirt/vest and enclosed shoes or boots, as well as meet all pre-requisites listed.

#### Course Fees

A deposit of \$1,000 is required within 7 days of enrolment, with the balance to be paid on the second day of classroom attendance. All enrolments are considered tentative until payment of the deposit is received.

#### Course Outcome

Upon successful completion participants will receive a Nationally Recognised Statement of Attainment in *CPCCLBM3001 - Licence to operate a concrete placing boom* and an Assessment Summary (AS1) from the accredited assessor to lodge your HRW Licence application.

#### Important

Upon successful completion of this course, participants have 60 days to submit their application for their HRW Licence online via their QGov account. Licensing fees apply.

Anyone assessed as 'not competent' can be reassessed on the relevant section **within 2 calendar months of initial assessment** (after 2 months a full reassessment will be required). All reassessments must be undertaken within 12 months.

Workplace, Health & Safety QLD HRW Licences are valid for 5 years.



<b>Unit:</b>	CPCCLRG3001A - Licence to perform rigging basic level
<b>Price:</b>	Price on application
<b>Duration:</b>	See below
<b>Location:</b>	Our venue or at your worksite
<b>Pre-requisites:</b>	Hold the unit Licence to perform dogging & High Risk Work Licence for class DG, minimum age 18, 100 points of Identification (as per Workplace, Health & Safety QLD), adequate literacy & numeracy and USI.

This unit specifies the outcomes required to perform basic rigging work associated with movement of plant and equipment, steel erections, hoists (including mast climbing hoists), placement of pre-cast concrete, safety nets and static lines, perimeter safety screens and shutters; and cantilever crane loading platforms for licensing purposes.

### Course Delivery

A learner guide and review questions will be provided to the student prior to course commencement. To fulfil the training requirements for this course, the student must read through this, complete the review questions and bring both with them on the day.

The course consists of face-to-face theory, mathematical and practical training. Assessment is conducted through a combination of practical demonstration and verbal or written questioning, including mathematics.

Students may choose to undertake workplace training - After 1 day of formal training, students are issued with a logbook to record their practical workplace training (196 hours) under the supervision of a licensed operator. When the student is ready, a final assessment will be undertaken. Final assessment must be completed within 12 months.

### Course Content

- Relevant Australian Standards, Legislation and Regulations
- WH&S policy and Codes of Practice
- Manufacturers specifications and instructions
- Hazard Identification and hazard prevention

# Basic Rigging

## QUEENSLAND

- Communicate effectively and work safely with others
- Conduct risk assessment and management procedures
- Inspect plant and equipment
- Install fall arrest system (Static line)
- Use of a safety harness / fall arrest system
- Install crane loading platforms, safety net, shutter and safety screen
- Work safely at heights
- Erect structural steel and precast panel
- Set up and operate a winch for load movement
- Install a materials hoist, or mast climber
- Knots, bends and hitches including sheet bend, becket hitch, running bowline, double bowline
- Splices and whippings including eye splice, back splice, short splice, sail makers whipping, common whipping, west countryman's.

### Course Requirements

Students will need to wear appropriate clothing including a hi-visibility shirt/vest and enclosed shoes or boots, as well as meet all pre-requisites listed.

### Course Fees

A deposit of \$1,000 is required within 7 days of enrolment, with the balance to be paid on the second day of classroom attendance. All enrolments are considered tentative until payment of the deposit is received.

### Course Outcome

Upon successful completion participants will receive a Nationally Recognised Statement of Attainment in *CPCCLRG3001A - Licence to perform rigging basic level* and an Assessment Summary (AS1) from the accredited assessor to lodge your HRW Licence application.

### Important

Upon successful completion of this course, participants have 60 days to submit their application for their HRW Licence online via their QGov account. Licensing fees apply.

Anyone assessed as 'not competent' can be reassessed on the relevant section **within 2 calendar months of initial assessment** (after 2 months a full reassessment will be required). All reassessments must be undertaken within 12 months.

Workplace, Health & Safety QLD HRW Licences are valid for 5 years.





**Unit:** RIIHAN301E Operate elevating work platform

**Price:** Price on application

**Duration:** See below

**Location:** Our venue or your worksite for groups

**Pre-requisites:** Unique Student Identifier.

It is recommended that the student has adequate health and fitness to carry out tasks safely, and adequate literacy and numeracy to complete the Assessment.

This course is designed to give participants the knowledge and skills to operate elevating work platforms which are not classified as requiring a high-risk work (HRW) licence.

Participants may complete singular or multiple machine classes, according to the type of work they will be undertaking. Machine classes are: Vertical Lift (VL), Scissor Lift (SL), Boom Lift under 11 metres (BL), Trailer Mounted Boom (TL), and Truck Mounted Boom (TM).

*Please check with DATS to see if your required machine class is available.*

**Note:** If you require the use of a boom-type elevated work platform with a height or reach of 11 metres or more, you must hold a valid National Licence to Perform High Risk Work class WP. Please see our three-day EWP over 11m course.

# EWP (under 11m) 'Yellow Card'

QUEENSLAND

## Course Delivery

A learner guide and review questions will be provided to the student prior to course commencement. To fulfil the training requirements for this course, the student must read through this, complete the review questions and bring both with them on the day. This course is delivered face-to-face including classroom theory and practical training and can be delivered in 1 – 3 days depending on experience (if student can produce sufficient evidence of previous experience this course can reduce timeframe to 1 day).

## Course Content

Participants will gain theoretical knowledge and practical skills in:

- Hazard identification, risk assessment and controls
- Fall arrest harness inspection, fitting and use
- Identify safe operating parameters using data plate and manual
- Conduct pre-operational and post operational checks
- Operation of EWP
- Emergency procedures
- Theory assessment and practical observation and demonstration

## Course Requirements

Students will need to wear appropriate clothing including a hi-visibility shirt/vest and enclosed shoes or boots, as well as meeting all pre-requisites.

## Course Fees

All enrolments are considered tentative until payment has been received.

## Course Outcome

Upon successful completion participants will receive a Nationally Recognised Statement of Attainment in Operate elevating work platform (RIIHAN301E).

An interim record of training will be given to you on the day of training, which can be used until you receive your yellow card from the EWPA, which will be posted to your home address.



# Confined Spaces

QUEENSLAND

This course is delivered face-to-face including classroom theory and practical training in a simulated confined space environment.

Theory and practical training and assessment is delivered in 1 day.

## Course Content

The course outlines the following:

- Confined Spaces Legislation, Codes of Practice, Australian Standards
- Confined Space Hazards
- Risk Assessment and Workplace Safety Procedures
- Selection, fit, use and maintenance of entry/exit/heights equipment
- Gas Monitoring
- Rescue Drills and Fire Protection

## Course Requirements

Students will need to wear appropriate clothing including a hi-visibility shirt/vest and enclosed shoes or boots, as well as meet all pre-requisites.

## Course Fees

All enrolments are considered tentative until payment has been received.

## Course Outcome

Upon successful completion participants will receive a Nationally Recognised Statement of Attainment in *Enter and work in confined spaces (RIIWH202D)*.

It is recommended that a refresher course be undertaken every 2 years.

**Unit:** RIIWH202D Enter and work in confined spaces  
**Price:** \$350  
**Duration:** See below  
**Location:** Our venue, or your worksite for groups (please ask us for a quote)  
**Pre-requisites:** Unique Student Identifier.

It is recommended that the student has adequate health and fitness to carry out tasks safely, and adequate literacy and numeracy to complete the Assessment.

This course aims to meet the training requirements of the WHS Regulation with regards to “Working in a Confined Space” and Australian Standards 2865-2009 *Confined Spaces*. Confined Spaces are potentially high risk workplaces, because their atmosphere can change quickly and without notice.

Confined Spaces may include tanks, silos, manholes, pump stations, dry wells and reservoirs.

## Course Delivery

A learner guide and review questions will be provided to the student prior to course commencement. To fulfil the training requirements for this course, the student must read through this, complete the review questions and bring both with





# Work Safely at Heights

QUEENSLAND

## Course Content

This course will alert participants to the hazards of working at heights and the potential for serious or fatal injury.

On completion, participants will be able to recognise and assess hazards of working at heights. They will also know how to apply this knowledge in their own workplaces with a focus on eliminating potential hazards. The following areas are covered:

- Recognising the hazards
- Understanding the health effects
- Complying with the law
- Identifying and assessing hazards
- Recommending control measures and programs
- Fall Prevention
- Hand Rail & Guard Rail Systems
- Harness & Safety Systems
- Eliminating risks
- Rescue plan

## Course Requirements

Students will need to wear appropriate clothing including a hi-visibility shirt/vest and enclosed shoes or boots, as well as meet all pre-requisites.

## Course Fees

All enrolments are considered tentative until payment has been received.

## Course Outcome

Upon successful completion participants will receive a Nationally Recognised Statement of Attainment in *RIIWHS204D - Work safely at heights*.

It is recommended that a refresher course be undertaken every 2 years.

**Unit:** RIIWHS204D Work safely at heights  
**Price:** \$325 per person  
**Duration:** 1 day  
**Location:** Our venue, or your worksite for groups (please ask us for a quote)  
**Pre-requisites:** Unique Student Identifier.

It is recommended that the student has adequate health and fitness to carry out tasks safely, and adequate literacy and numeracy to complete the Assessment.

Many work operations are conducted above ground level or the workplace floor. Falling from such heights is a serious hazard and a major cause of workplace injury. Working at heights can become even more dangerous because of weather conditions, inadequate housekeeping and poorly designed and inadequately maintained equipment.

Those responsible for health and safety in the workplace, and those who work at heights, should be familiar with the design principles that can eliminate or control the hazardous elements of working at heights. They should also be familiar with the use of safety equipment.

## Course Delivery

A learner guide and review questions will be provided to the student prior to course commencement. To fulfil the training requirements for this course, the student must read through this, complete the review questions and bring both with them on the day.

This course is delivered face-to-face including classroom theory and practical training.



**Unit:** See below  
**Price:** Price on application  
**Duration:** See below  
**Location:** Our venue or your worksite for groups (please ask us for a quote)  
**Pre-requisites:** Unique Student Identifier.

It is recommended that the student has adequate health and fitness to carry out tasks safely, and adequate literacy and numeracy to complete the Assessment.

In accordance with WHS laws in Australia, Licences are no longer issued. Employers (or controllers of a plant) must ensure that operators have received adequate information and training to minimise the health and safety risk.

DATS offers formal face-to-face training & assessment in:

- **Tractor** - RIIMPO315E Conduct tractor operations\*
- **Roller** - RIIMPO317F Conduct roller operations
- **Skid Steer** - RIIMPO318F Conduct civil construction skid steer loader operations
- **Backhoe/loader** - RIIMPO319E Conduct backhoe/loader operations\*
- **Excavator** - RIIMPO320F Conduct civil construction excavator operations
- **Wheeled Front End Loader** - RIIMPO321F Conduct civil construction wheeled front end loader operations
- **Tracked Front End Loader** - RIIMPO322E Conduct civil construction tracked front end loader operations\*
- **Tip Truck** – RIIVEH304D Conduct tip truck operations\*
- **Dozer** - RIIMPO323F Conduct civil dozer operations\*
- **Grader** - RIIMPO324F Conduct civil construction grader operations\*
- **Scraper** - RIIMPO325E Conduct civil construction scraper operations\*
- **Water cart** - RIIMPO326E Conduct water vehicle operations
- **Articulated Haul Truck** - RIIMPO337E Conduct articulated haul truck operations

# Load Shifting

QUEENSLAND

## Course Delivery

Training & Assessment - For applicants with little or no experience, who do NOT hold a previous licence:

- After enrolment and payment of required deposit, a learner guide and review questions will be provided to the student prior to course commencement. To fulfil the training requirements for this course, the student must read through this, complete the review questions and bring both with them on the day.
- Student attends 1 day of face to face theory and practical training.
- On completion of training, the student will be issued with a logbook, which is to be completed on the job by a supervisor who holds the relevant qualification or licence.
- Once the student has completed the nominated hours of supervised experience (as determined by the Trainer, based on the student's level of experience), and the Supervisor is confident the student has reached the required level of knowledge in the safety and operation of the machine, the student can book in for their final review and assessment.

*Note: If the student is unable to obtain on the job experience or employment to undertake the required logbook hours, DATS can arrange skills training with our trainer for an additional fee.*

It is expected that a student with very little or no experience would need to undertake the nominal hours\* of supervised work experience to acquire the necessary skills to be competent in the unit. Techniques used to enable judgements to be made regarding a student's competency include direct observation checklists, verbal and written questioning and practical tasks.

### \*Nominal hours:

Dozer/Grader	240 hours
Backhoe/ Excavator	200 hours
Front-end Loader/Scraper	160 hours
Skid steer/Roller	80 hours
Tractor/Tip Truck	60 hours
Water Vehicle/Articulated	
Haul Truck/Rigid Haul Truck	40 hours

Assessment Only - For applicants WITH SUFFICIENT EXPERIENCE who may or may not hold a previous licence or competency and wish to be assessed for the Unit of Competency (if approved):

- Prior to enrolment, students must provide as much evidence as possible as to their experience operating the machine, e.g. a signed letter from an employer on company letterhead, or an old licence and a Referee Testimonial /Third Party Report (available from DATS).
- Once the student has provided adequate evidence of prior experience on the machine, they can submit their enrolment along with payment, and a Learner Guide will be issued for study purposes.
- Student attends a face to face review of their theory and practical skills.
- On completion of the review, if the student is deemed to have sufficient knowledge and practical ability, their final assessment will be conducted.

Techniques used to enable judgements to be made regarding a student's competency include direct observation checklists, verbal and written questioning and practical tasks.

### Course Content

The course outlines the following:

- Plan and prepare for operations
- Conduct machine operation
- Lift, carry and place materials (if applicable)
- Select, fit and remove attachments (if applicable)
- Prepare to relocate the machine (if applicable)
- Carry out maintenance
- Conduct housekeeping activities

### Course Requirements

Students will need to wear appropriate clothing including a hi-visibility shirt/vest and enclosed shoes or boots, as well as meet all pre-requisites.

### Course Fees

All enrolments are considered tentative until payment has been received.

### Course Outcome

Upon successful completion participants will receive a Nationally Recognised Statement of Attainment in the relevant unit of competency.



**Verification of Competency  
(VOC's) Available**



[www.datservices.com.au](http://www.datservices.com.au)  
Accredited provider no. 31664

